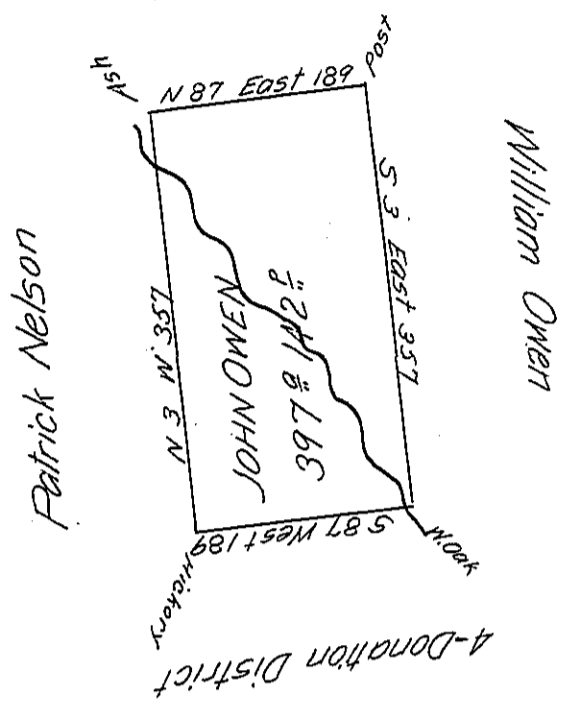


John Owen

Phillip Irwin



Surveyed the above the 20<sup>th</sup> day of April 1819 on a Warrant in the name of John Owen dated the 21<sup>st</sup> of April 1792 and by order of the Board of Property was directed to be resurveyed agreeably to the lines run by John Watkin in lew of those run by Benj<sup>r</sup> Stokeley late Deputy Surveyor said tract lays in <sup>Pimatuning</sup> ~~the~~ township Mercer County  
 Allen Dunn D.S.

IN TESTIMONY that the above is a copy of the original remaining on file in the Department of Internal Affairs of Pennsylvania, made conformably to an Act of Assembly approved the 16th day of February, 1833, I have hereunto set my Hand and caused the Seal of said Department to be affixed at Harrisburg, this fifth day of May 1906

*Leaac R. Brown*  
 Secretary of Internal Affairs.